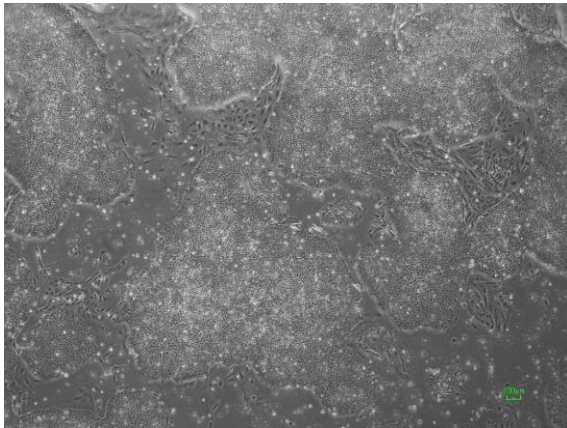


【 CIRA-jk-0030 】 Morphology of iPSC colonies

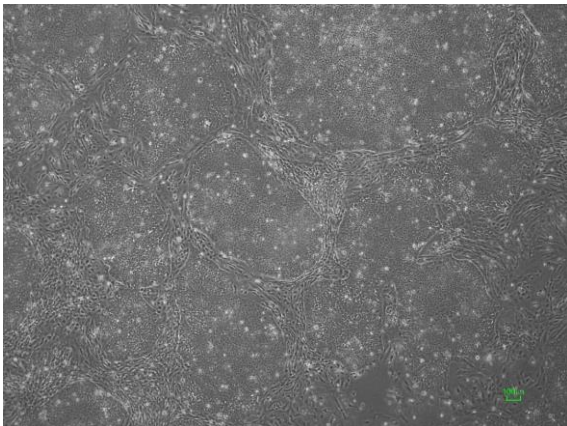
CiRA -jk-0030-A: passage-2



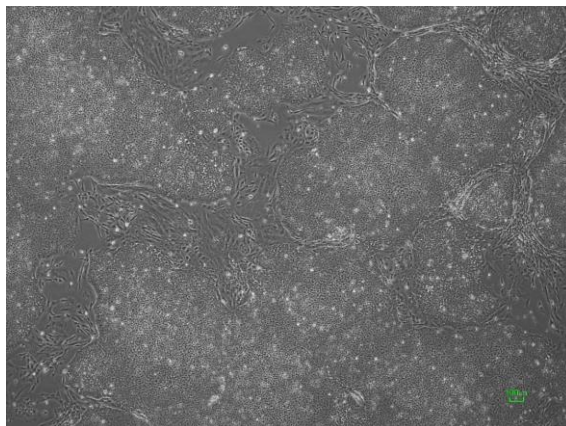
CiRA -jk-0030-B: passage-2



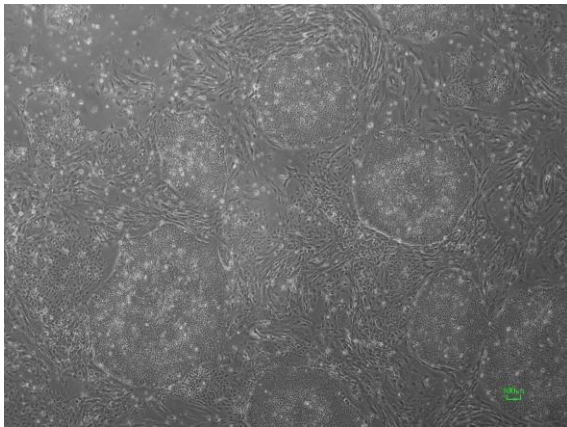
CiRA -jk-0030-C: passage-2



CiRA -jk-0030-D: passage-2



CiRA -jk-0030-E: passage-2



CiRA -jk-0030-F: passage-2



(All images were captured at 4x magnification)